

Universal Series Model 14C With Model 230M Power Unit Hydraulic Vibratory Driver/ Extractor



New design combines high eccentric moment (1,400 in-lbs, 16 kg-m) and suspended weight with clamp of 4,650 lbs (2110 kg)
Lighter weight for increased reach or use with smaller cranes
Reduced height for better access in low-overhead situations
Up to 55 tons (490 kN) line pull for extraction

Patented Dual-pull™ suppressor provides maximum vibration isolation during driving and light extraction combined with high pull capability for tough extraction jobs.

225HP (168 kW) CAT C6.6 Tier 3 (State IIIA) engine meets all EPA & EU emission regulations.

Optional 2,650 lbs (1200 kg) of bias weight increases pile penetration rates in difficult soils.

Full range of clamps available for sheet piling, H-Beams, pipe & caissons and timber & concrete piles.

Maximum efficiency and reliability ensured by our open-loop hydraulic system. Highest quality, reliable piston pumps and motor.

Remote-control pendant for vibrator and clamp with emergency stop. Engine speed control for fuel efficiency.

Adaptable for underwater, low headroom or box leads operation.

Environmentally friendly, Chevron Clarity® non-toxic, biodegradable hydraulic oil.

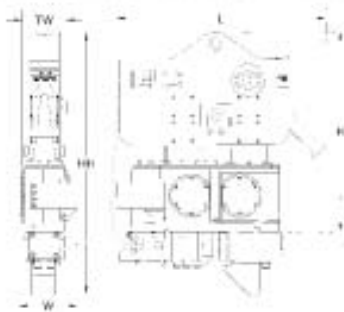
Designed and manufactured in USA by ICE®, world leader in cost-effective foundation equipment since 1974.



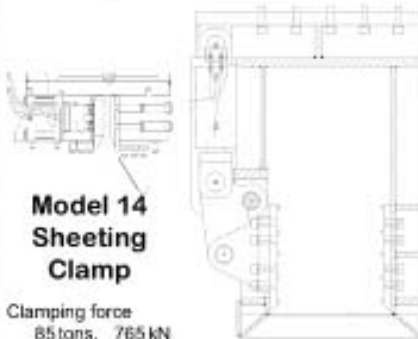
Universal Series Model 14C

With Model 230M Power Unit

Hydraulic Vibratory Driver/ Extractor

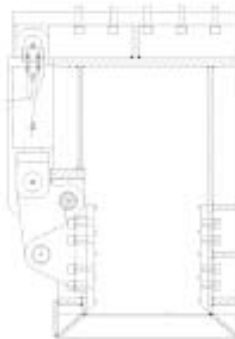


Clamps & Accessories



**Model 14
Sheeting
Clamp**

Clamping force
85 tons, 765 kN
Weight
866 lbs, 393 kg



**Model 40
Wood, Concrete &
Pipe Clamp**

Clamping force
40 tons, 355 kN
Weight
3,220 lbs, 1460 kg



**3' Caisson Beam with
Model 100BH Caisson Clamps**

Clamping force
220 tons, 1950 kN
Weight
3,000 lbs, 1360 kg

Other Model 14C Accessories

Bias weights
Vibrator stand

Model 14C Vibrator Specifications

Eccentric moment	1,400 in.-lbs	16 kg-m
Frequency range	1000-2200 vpm	
Driving force	74 tons	930 kN
Centrifugal force	72 tons	855 kN
Amplitude (free w/o clamp)	1.2 in	30 mm
Standard line pull for extracting	48 tons	430 kN
Maximum line pull for extracting	48 tons	430 kN
Weight (no clamp or hoses)	3,785 lbs	1716 kg
Non-vibrating weight	1,400 lbs	635 kg
Height without clamp (H)	62 in	1565 mm
Length (L)	65 in	1635 mm
Width (W)	19 in	480 mm
Throat width (TW)	13.25 in	337 mm
Hydraulic hose length	100 ft	30 m
Hydraulic hose weight	850 lbs	385 kg
Height with sheeting clamp* (HH)	81 in	2060 mm
Weight with sheeting clamp & 1/2 hoses*	4,650 lbs	2110 kg
Height with beam & caisson clamps*	95 in	2400 mm
Weight with beam & caisson clamps*	7,190 lbs	3260 kg

* See "Clamps and Accessories Manual" for detail description

Model 230M Power Unit Specifications

Engine	Caterpillar C6.6	
Power	225 HP	168 kW
Operating speed	2,200 rpm	2200 rpm
Max. motors pressure	4,800 psi	330 bar
Motors flow (no load)	73 gpm	275 lpm
Clamp pressure	4,500 psi	310 bar
Clamp flow	6 gpm	25 lpm
Weight (w/ full fluid & 1/2 fuel)	9,310 lbs	4225 kg
Length	110 in	2800 mm
Width	58 in	1475 mm
Height	77 in	1960 mm
Hydraulic reservoir	275 gal	1040 liters
Fuel capacity	120 gal	460 liters

International Construction Equipment, Inc.
301 Warehouse Drive
Matthews, NC 28104 USA
888-ICE-USA1 / 704-821-8200
sales@iceusa.com / www.iceusa.com

Constant improvement and engineering progress make it necessary that ICE[®], Inc reserve the right to make specification changes without notice. Please consult us the latest available information.