

Universal Series Model 66C With Model 800E Power Unit Hydraulic Vibratory Driver/ Extractor



Highest frequency (1650 vpm) and driving force (262 tons, 2330 kN) in its class
800HP (597kW) CAT C18 Tier 2 (Stage II) engine meets all
EPA & EU emission regulations
Up to 125 tons (1112 kN) line pull for extraction



Patented Dual-pull™ suppressor provides maximum vibration isolation during driving and light extraction combined with high pull capability for tough extraction jobs.

Computer controls on power unit reduce fuel consumption, pinpoint repair needs, & provide diagnostics and logs.

Optional 5,500 lbs (2494 kg) of bias weight increases pile penetration rates in difficult soils.

Maximum efficiency and reliability ensured by our open-loop hydraulic system. Highest quality, reliable piston pumps and motors.

Remote-control pendant for vibrator and clamp with emergency stop. Engine speed control for fuel efficiency.

Full range of clamps available for sheet piling, H-Beams, pipe & caissons and timber & concrete piles.

Adaptable for underwater, low headroom or box leads operation.

Heavy steel enclosure and fuel-tank subbase protect power unit.

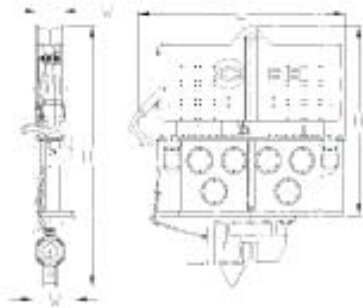
Environmentally friendly, Chevron Clarity® non-toxic, biodegradable hydraulic oil.

Designed and manufactured in USA by ICE®, world leader in cost-effective foundation equipment since 1974.

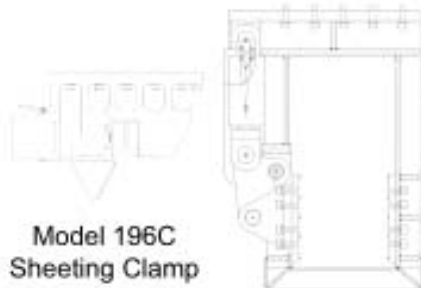
Universal Series Model 66C

With Model 800E Power Unit

Hydraulic Vibratory Driver/ Extractor

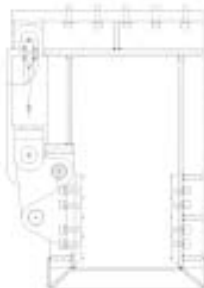


Clamps & Accessories



**Model 196C
Sheeting Clamp**

Clamping force
196 tons, 1744 kN
Weight
2,840 lbs, 1291 kg



**Model 85
Wood, Concrete
& Pipe Clamp**

Clamping force
85 tons, 756 kN
Weight
6,500 lbs, 2948 kg



**6.5' Caisson Beam with
Model 142BH Caisson Clamps**

Clamping force
284 tons, 1526 kN
Weight
4,424 lbs, 2007 kg

Other Model 66C Accessories

12' Caisson beam Sled for 32' leads
10' Clamp extension Low-headroom suppressor
90° Turning plate Vibrator stand
Bias weights

Model 66C Vibrator Specifications

Eccentric moment	6,600 in-lbs	78 kg-m
Frequency range	800-1650 vpm	
Driving force	262 tons	2330 kN
Centrifugal force	255 tons	2270 kN
Amplitude (free w/o clamp)	1.23 in	31 mm
Standard line pull for extracting	70 tons	620 kN
Maximum line pull for extracting	95 tons	845 kN
Weight (no clamp or hoses)	15,250 lbs	6918 kg
Non-vibrating weight	4,560 lbs	2068 kg
Height without clamp (H)	101 in	2550 mm
Length (L)	98 in	2940 mm
Width (W)	22 in	560 mm
Throat width (TW)	14.25 in	362 mm
Hydraulic hose length	150 ft	46 m
Hydraulic hose weight	2,400 lbs	1090 kg
Height with sheeting clamp* (HH)	139 in	3512 mm
Weight with sheeting clamp & 1/2 hoses*	19,250 lbs	8735 kg
Height with beam & caisson clamps*	151 in	3825 mm
Weight with beam & caisson clamps*	26,710 lbs	12115 kg

* See "Clamps and Accessories Manual" for detail description

Model 800E Power Unit Specifications

Engine	Caterpillar Q18	
Power	800 HP	597 kW
Operating speed	1,800 rpm	1800 fpm
Maximum motors pressure	5,500 psi	380 bar
Motors flow (no load)	250 gpm	950 lpm
Clamp pressure	4,500 psi	310 bar
Clamp flow	6 gpm	21 lpm
Weight (w/ full fluid & 1/2 fuel)	26,500 lbs	12020 kg
Length	218 in	5540 mm
Width	80 in	2035 mm
Height	104 in	2630 mm
Hydraulic reservoir	550 gal	2080 liters
Fuel capacity	200 gal	758 liters

Constant improvement and engineering progress make it necessary that ICE[®], Inc reserve the right to make specification changes without notice. Please consult us the latest available information.

International Construction Equipment, Inc.
301 Warehouse Drive
Matthews, NC 28104 USA
888-ICE-USA1 / 704-821-8200
sales@iceusa.com / www.iceusa.com