



# ICE Model 55B Vibratory Pile Driver/Extractor with Model 650 Power Unit

Highest frequency (1500 vpm) and driving force 182 tons (1621 kN) in its class

Up to 80 tons (712 kN) line pull for extraction



Optional 5,500 lbs (2494 kg) of bias weight increases pile penetration rates in difficult soils.

Maximum efficiency and reliability ensured by our open-loop hydraulic system. Highest quality, reliable piston pumps and motors.

Remote-control pendant for vibrator and clamp with emergency stop. Engine speed control for fuel efficiency.

Environmentally friendly, Chevron Clarity® non-toxic, biodegradable hydraulic oil.

Full range of clamps available for sheet piling, H-Beams, pipe & caissons and timber & concrete piles.

Adaptable for underwater, low headroom or box leads operation.

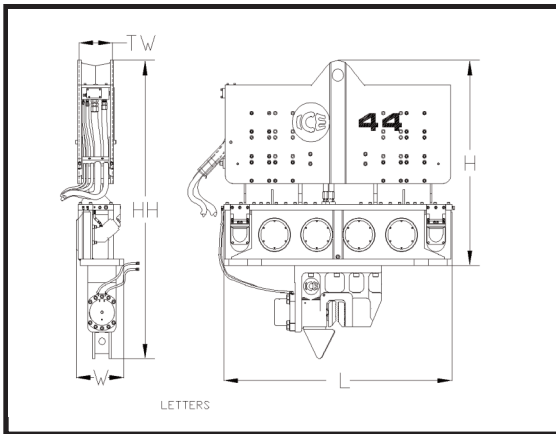
Heavy steel enclosure and fuel-tank subbase protect power unit.

Designed and manufactured in USA by ICE®, world leader in cost-effective foundation equipment since 1974.

International Construction Equipment, Inc.  
301 Warehouse Drive  
Matthews, NC 28104 USA

888-ICE-USA1 / 704-821-8200  
sales@iceusa.com  
www.iceusa.com

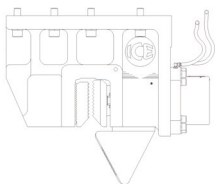
# ICE Model 55B Vibratory Pile Driver / Extractor



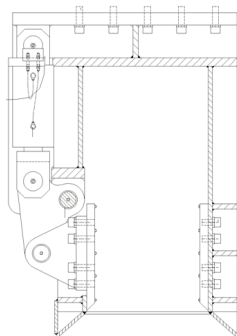
## Model 55B Vibrator Specifications

Eccentric moment	5,500 in-lbs	63 kg-m
Frequency range	800-1500 vpm	
Driving force	182 tons	1621 kN
Centrifugal force	176 tons	1566 kN
Amplitude (free w/o clamp)	1.4 in	32 mm
Standard line pull for extracting	54 tons	483 kN
Maximum line pull for extracting	80 tons	725 kN
Weight (no clamp or hoses)	12,660 lbs	5740 kg
Non-vibrating weight	4,560 lbs	2068 kg
Height without clamp (H)	84 in	2134 mm
Length (L)	97 in	2464 mm
Width (W)	21 in	534 mm
Throat width (TW)	14.25 in	362 mm
Hydraulic hose length	150 ft	46 m
Hydraulic hose weight	1,425 lbs	646 kg
Height with sheeting clamp* (HH)	122 in	3096 mm
Weight with sheeting clamp & 1/2 hoses*	15,570 lbs	7065 kg
Height with beam & caisson clamps*	110 in	2784 mm
Weight with beam & caisson clamps*	16,440 lbs	7460 kg

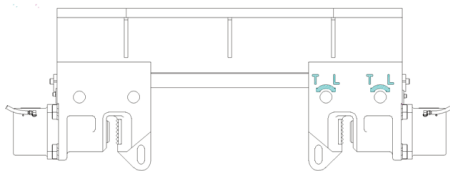
## Clamps and Accessories



**Model 140C  
Sheeting Clamp**  
Clamping force  
140 tons, 1245 kN  
Weight  
2,150 lbs, 975 kg



**Model 85  
Wood, Concrete &  
Pipe Clamp**  
Clamping force  
85 tons, 756 kN  
Weight  
6,500 lbs, 2948 kg



**6.5' Caisson Beam with  
Model 100BH Caisson Clamps**

Clamping force  
200 tons, 886 kN  
Weight  
3,203 lbs, 1453 kg

### Other Model 55B Accessories

12' Caisson beam  
10' Clamp extension  
90° Turning plate  
Bias weights  
Sled for 26" leads  
Low-headroom suppressor  
Vibrator stand

\* See "Clamps and Accessories" for detail description

## Model 650 Power Unit Specifications

Engine	Caterpillar 3412	
Power	650 HP	485 kW
Operating speed	1,975 rpm	1975 rpm
Max. motors pressure	5,500 psi	380 bar
Motors flow (no load)	237 gpm	897 lpm
Clamp pressure	5,500 psi	380 bar
Clamp flow	3 gpm	11 lpm
Weight (w/ full fluid & 1/2 fuel)	21,100 lbs	9571 kg
Length	186 in	4040 mm
Width	66 in	1855 mm
Height	100 in	2540 mm
Hydraulic reservoir	550 gal	2082 liters
Fuel capacity	283 gal	1071 liters

Constant improvement and engineering progress make it necessary that ICE, Inc reserve the right to make specification changes without notice. Please consult us for the latest available information.