



International Construction Equipment
301 Warehouse Drive
Matthews, NC 28104
Phone: 704 821-8200
Email info@iceusa.com

ICE® Model 66C Hydraulic Vibratory Driver/ Extractor with Model 800E Power Unit



Highest frequency (1650 vpm) and driving force (262 tons, 2330 kN) in its class.
800HP (597kW) CAT C18 Tier 2 (Stage II) engine meets all EPA & EU emission regulations.
Up to 95 tons (845 kN) line pull for extraction.



Patented Dual-pull™ suppressor provides maximum vibration isolation during driving and light extraction combined with high pull capability for tough extraction jobs.

Computer controls on power unit reduce fuel consumption, pinpoint repair needs, while providing diagnostics and logs.

Optional bias weights up to 5500 lbs (2495 kg) to increase pile penetration rates in difficult soils.

Maximum efficiency and reliability are provided by our open-loop hydraulic system and application proven piston pumps and motors.

Remote-control pendant for vibrator and clamp with emergency stop. Engine speed control for fuel efficiency.

Full range of clamps available for sheet piling, H-Beams, pipe & caissons in addition to timber & concrete piles.

Adaptable for underwater, low headroom or box leads operation.

Heavy steel enclosure and fuel-tank subbase protect power unit.

Environmentally friendly Chevron Clarity® non-toxic, biodegradable hydraulic oil.

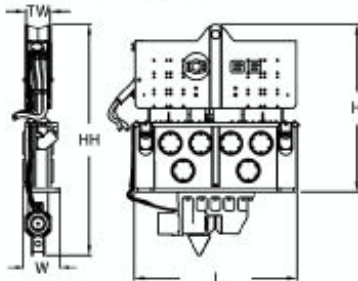
Designed and manufactured in USA by ICE®, world leader in cost-effective foundation equipment since 1974.

INTERNATIONAL CONSTRUCTION EQUIPMENT, INC.

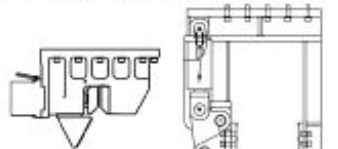
ICE® Model 66C Hydraulic Vibratory Driver/ Extractor with Model 800E Power Unit



Dimensions



Clamps & Accessories

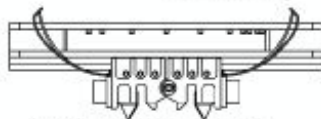


Model 196C Sheeting Clamp

Clamping force
196 tons, 1744 kN
Weight
2,900 lbs, 1315 kg

Model 85 Wood, Concrete & Pipe Clamp

Clamping force
85 tons, 756 kN
Weight
6,500 lbs, 2950 kg



6.5' Caisson Beam with Model 142BH Caisson Clamps

Clamping force
284 tons, 1525 kN
Weight
4,927 lbs, 2236 kg

Other Model 66C Accessories

6' & 12' Caisson beams
10' Clamp extension
Wireless Remote
90° Turning plate
Bias weights
Vibrator stand
Sled for 32" loads

Model 66C Vibrator Specifications

| | | |
|---|--------------|----------|
| Eccentric moment | 6,600 in-lbs | 76 kg-m |
| Maximum frequency | 1650 vpm | |
| Driving force | 262 tons | 2330 kN |
| Centrifugal force | 255 tons | 2270 kN |
| Amplitude (free w/o clamp) | 1.23 in | 31 mm |
| Standard line pull for extracting | 70 tons | 620 kN |
| Maximum line pull for extracting | 95 tons | 845 kN |
| Weight (no clamp or hoses) | 15,250 lbs | 6918 kg |
| Non-vibrating weight | 4,560 lbs | 2068 kg |
| Height without clamp (H) | 101 in | 2550 mm |
| Length (L) | 98 in | 2940 mm |
| Width (W) | 22 in | 560 mm |
| Throat width (TW) | 14.25 in | 362 mm |
| Hydraulic hose length | 150 ft | 46 m |
| Hydraulic hose weight | 2,400 lbs | 1090 kg |
| Height with sheeting clamp* (HH) | 139 in | 3512 mm |
| Weight with sheeting clamp & 1/2 hoses* | 19,250 lbs | 8735 kg |
| Height with beam & caisson clamps* | 151 in | 3825 mm |
| Weight with beam & caisson clamps* | 26,710 lbs | 12115 kg |

* See "Clamps and Accessories Manual" for in depth description

Model 800E Power Unit Specifications

| | | |
|-----------------------------------|-----------------|-------------|
| Engine | Caterpillar C18 | |
| Power | 800 HP | 597 kW |
| Operating speed | 1,800 rpm | 1800 rpm |
| Maximum motors pressure | 5,500 psi | 380 bar |
| Motors flow (no load) | 250 gpm | 950 lpm |
| Clamp pressure | 4,500 psi | 310 bar |
| Clamp flow | 6 gpm | 21 lpm |
| Weight (w/ full fluid & 1/2 fuel) | 26,500 lbs | 12020 kg |
| Length | 218 in | 5540 mm |
| Width | 80 in | 2035 mm |
| Height | 104 in | 2630 mm |
| Hydraulic reservoir | 550 gal | 2080 liters |
| Fuel capacity | 200 gal | 750 liters |

International Construction Equipment, Inc.
301 Warehouse Drive
Matthews, NC 28104 USA
888-ICE-USA1 / 704-821-8200
sales@iceusa.com / www.iceusa.com

Constant improvement and engineering progress make it necessary that ICE®, Inc reserve the right to make specification changes without notice. Please consult ICE® for the latest available information.

©International Construction Equipment, Inc. All rights reserved. May 2010.

UV-66C-Sept-2010

"Due to improvements to ICE manufactured products and the EPA mandated Tier III emission regulations, unit specifications are subject to change without notice. Please contact ICE engineering department to confirm possible changes."