



International Construction Equipment  
301 Warehouse Drive  
Matthews, NC 28104  
Phone: 704 821-8200  
Email [info@iceusa.com](mailto:info@iceusa.com)

## **ICE® MODEL 216E EXCAVATOR - MOUNTED HYDRAULIC VIBRATORY DRIVER/EXTRACTOR**



Excavator-mounted unit for maximum mobility.  
High speed (1700 vpm) and high driving force (45 tons, 400 kN)  
for maximum production.  
Crowd with 20 tons (175 kN) of force for highest driving rates.

Excavator bucket circuit provides all hydraulic requirements

Gear case design provides maximum vibrator speed and light weight.

Clamps available for single & double sheet piling, H-Beams, caissons to 4' (1220 mm), timber, concrete and pipe piles.

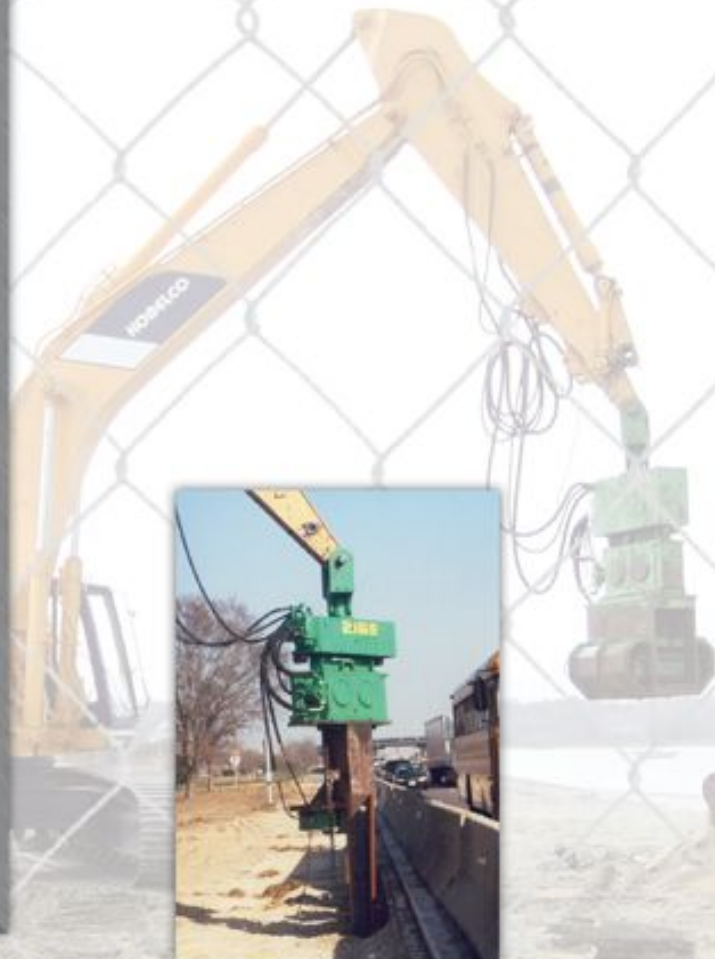
Available 45 tons (400 kN) of extraction pull capability.

Drives and extracts H-Beams, sheet piles, trench plates, pipe piles, guardrail posts and more

360° swivel allows approach to task from any direction

Adaptable for underwater operation.

Designed and manufactured in USA by ICE®, world leader in cost-effective foundation equipment since 1974.



UVE-216E-Sept-2010

# INTERNATIONAL CONSTRUCTION EQUIPMENT, INC.

301 Warehouse Dr.  
Matthews, NC 28104 USA

888-ICE-USA1  
sales@iceusa.com | www.iceusa.com

## ICE® MODEL 216E EXCAVATOR - MOUNTED HYDRAULIC VIBRATORY DRIVER/EXTRACTOR



### Model 216E Excavator-Mounted Vibrator

Eccentric moment	1,100 in-lbs	12 kg-m
Maximum frequency	1700 vpm	
Maximum driving force	45 tons	400 kN
Maximum centrifugal force	40 tons	704 kN
Amplitude (free w/o clamp)	1 in	25 mm
Maximum line pull for extracting	45 tons	400 kN
Maximum crowd capability	20 tons	175 kN
Weight without clamp	3630 lbs	1650 kg
Weight with Model 216 clamp	4480 lbs	2030 kg
Weight with Model 90 clamp	4710 lbs	2155 kg
Non-vibrating weight	2030 lbs	862 kg
Height to pin without clamp (H)*	47 in	1180 mm
Height with Model 216 clamp (HH)*	63 in	1590 mm
Height with Model 90 clamp (HH)*	75 in	1900 mm
Length (L)	55 in	1400 mm
Width (W)	17 in	430 mm
Throat width (TW)	14 in	256 mm
Maximum pressure	5000 psi	345 bar
Required flow at 3500 psi (240 bar)	50 gpm	190 lpm
Vibrator speed per flow	34 rpg*	9 rpl*

\* Does not include excavator stick yoke that adds 16"-20" (400-510 mm)

\* rpg = rpm per gpm and rpl = rpm per lpm

### Performance with CAT 330C excavator

Frequency at low pressure	1700 vpm	29 Hz
Frequency at high pressure	1200 vpm	20 Hz

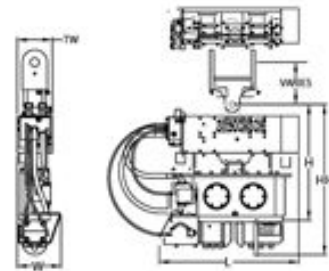
### Performance with CAT 245C excavator

Frequency at low pressure	1700 vpm	29 Hz
Frequency at high pressure	1050 vpm	18 Hz

Constant improvement and engineering progress make it necessary that ICE®, Inc reserve the right to make specification changes without notice. Please consult ICE® for the latest available information.

© International Construction Equipment, Inc. All rights reserved. Oct. 2010.

### Dimensions

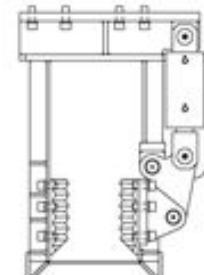


### Clamps & Accessories



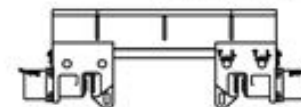
#### Model 216E Sheeting Clamp

Clamping force  
50 tons, 445 kN  
Weight  
866 lbs, 393 kg



#### Model 40 Wood, Concrete & Pipe Clamp

Clamping force  
40 tons, 355 kN  
Weight  
3,220 lbs, 1460 kg



#### 5' Caisson Beam with Model 100BH Caisson Clamps

Clamping force  
220 tons, 1950 kN  
Weight  
3,130 lbs, 1420 kg

#### Other Model 216E Accessories

Bias weights  
3' Caisson Beam

UVE-216E-Sept-2010

301 Warehouse Dr.  
Matthews, NC 28104 USA

888-ICE-USA1  
sales@iceusa.com | www.iceusa.com

---

"Due to improvements to ICE manufactured products and the EPA mandated Tier III emission regulations, unit specifications are subject to change without notice. Please contact ICE engineering department to confirm possible changes."