



International Construction Equipment
301 Warehouse Drive
Matthews, NC 28104
Phone: 704 821-8200
Email info@iceusa.com

Model HS50 Hydraulic Rotary Head



Two torque-speed combinations allow choice of high speed or high torque for maximum drilling production and profitability.

75 rpm or 45,000 ft-lbs (61000 Nm).

Simple single-motor and open-frame design for maximum reliability and ease of service and maintenance.

300HP (224 kW) or 350HP (250 kW) CAT Tier 3 (State IIIA) engine meets all EPA & EU emission regulations.

Angle or optional roller guides for 26" (660 mm) leads. Optional leads side-mount and H-Beam guides available.

Available Hex or API auger flighting connectors.

Available swivel for injecting air, water or grout.

High crowd and extraction forces to maximize drilling production.

Remote-control pendant with emergency stop engine speed control for fuel efficiency.

Environmentally friendly Chevron Clarity® non-toxic, biodegradable hydraulic oil.

Maximum efficiency and reliability ensured by our open-loop hydraulic system. Highest quality, reliable piston pumps and motor.

ICE® power units may be used for other ICE® equipment including vibratory hammers and hydraulic impact hammers.

Designed and manufactured in USA by ICE®, world leader in cost-effective foundation equipment since 1974.



INTERNATIONAL CONSTRUCTION EQUIPMENT, INC.

ICE® Model HS50 Hydraulic Rotary Head

WITH ICE® MODEL 300M OR 350E POWER UNITS



Performance

	HS50 with 300M		HS50 with 350E		HS50 Maximum**	
High-torque Setting						
Torque	45,000 ft-lbs	61000 Nm	45,000 ft-lbs	61000 Nm	52,650 ft-lbs	71400 Nm
Speed*	32 rpm		40 rpm		75 rpm	
High-speed Setting						
Torque	22,500 ft-lbs	30500 Nm	22,500 ft-lbs	30500 Nm	26,325 ft-lbs	35700 Nm
Speed*	65 rpm		75 rpm		75 rpm	

* Speeds are shown for free-hanging (no-load) units. Speed under actual drilling conditions may be 10% to 15% lower.

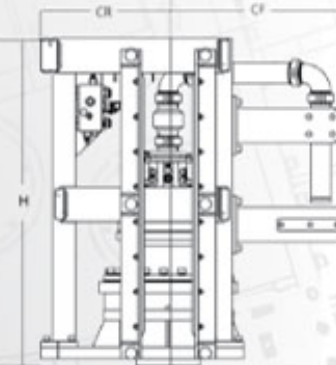
** Maximum torque requires a power unit capable of 6,500 psi (450 bar).

** Maximum speed requires a power unit capable of 106 gpm (395 lpm).

** Recommended maximum power for the HS50 is 350 HP (261 kW).

Capabilities, Weights & Dimensions

Crowd Force	80,000 lbs	36300 kg
Extraction Force	80,000 lbs	36300 kg
Optional Shaft ID	3 in	75 mm
Optional Swivel ID	3 in	75 mm
Weight with Guide & Swivel	3,050 lbs	1385 kg
Weight of 100' (30m) Hoses	1000 lbs	450 kg
Height (H)	57 in	1450 mm
Width with Leads	26 in	660 mm
Depth (CF + CR)	52 in	1312 mm
Center to Front (CF)	30 in	756 mm
Center to Rear (CR)	22 in	556 mm



Power Unit Specifications

	Model 300M			Model 350E		
	CAT	C7	Tier 3	CAT	C9	Tier 3
Engine	300	HP	250	350	HP	250
Power	300	HP	250	350	HP	250
Flow (no load)	85	gpm	320	104	gpm	395
Max Pressure	5,500	psi	380	5,500	psi	380
Weight	10,500	lbs	4765	11,300	lbs	5150
Length	130	in	3300	130	in	3300
Height	87	in	2200	87	in	2200
Width	63	in	1600	63	in	1600

801 Warehouse Drive
Matthews, NC 28104 USA
888-ICE-USA1 / 704-821-8200
sales@iceusa.com / www.iceusa.com

Constant improvement and engineering progress make it necessary that ICE®, Inc reserve the right to make specification changes without notice. Please consult ICE® for the latest available information.

©International Construction Equipment, Inc. All rights reserved. January 2012.

Model HS50 Hydraulic Rotary Head



Two torque-speed combinations allow choice of high speed or high torque for maximum drilling production and profitability.

75 rpm or 45,000 ft-lbs (61000 Nm).

Simple single-motor and open-frame design for maximum reliability and ease of service and maintenance.

300HP (224 kW) or 350HP (250 kW) CAT Tier 3 (State IIIA) engine meets all EPA & EU emission regulations.

Angle or optional roller guides for 26" (660 mm) leads. Optional leads side-mount and H-Beam guides available.

Available Hex or API auger flighting connectors.

Available swivel for injecting air, water or grout.

High crowd and extraction forces to maximize drilling production.

Remote-control pendant with emergency stop engine speed control for fuel efficiency.

Environmentally friendly Chevron Clarity® non-toxic, biodegradable hydraulic oil.

Maximum efficiency and reliability ensured by our open-loop hydraulic system. Highest quality, reliable piston pumps and motor.

ICE® power units may be used for other ICE® equipment including vibratory hammers and hydraulic impact hammers.

Designed and manufactured in USA by ICE®, world leader in cost-effective foundation equipment since 1974.



INTERNATIONAL CONSTRUCTION EQUIPMENT, INC.

"Due to improvements to ICE manufactured products and the EPA mandated Tier III emission regulations, unit specifications are subject to change without notice. Please contact ICE engineering department to confirm possible changes."