



International Construction Equipment  
 301 Warehouse Drive  
 Matthews, NC 28104  
 Phone: 704 821-8200  
 Email [info@iceusa.com](mailto:info@iceusa.com)

## ICE® Model 110D Hydraulic Vibratory Driver/Extractor with Model 1200E Power Unit

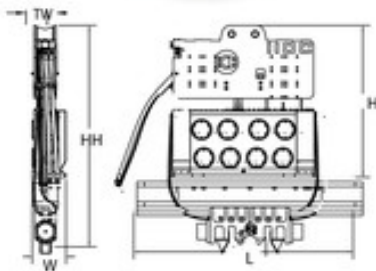


WWW.ICEUSA.COM  
 888-ICE-USA1

Highest driving force (412 tons, 3670 kN) in its class  
 Design combines high eccentric moment and low suspended weight  
 Twin 595HP (444 kW) CAT C15(s) meet current EPA/EU Flexibility engine emission regulations  
 Up to 140 ton (1250 kN) line pull for extraction



ICE Model 110D Vibratory Pile Hammer		
Eccentric moment	11,000 in-lbs	126 kg-m
Maximum frequency	1600 vpm	
Driving Force	412 tons	3670 kN
Centrifugal force	400 tons	3560 kN
Amplitude (free w/o clamp)	1.6 in	40 mm
Standard line pull for extracting	110 tons	1020 kN
Maximum line pull for extracting	140 tons	1250 kN
Weight (no clamp or hoses)	19,720 lbs	8945 kg
Non-vibrating Weight	4,800 lbs	2175 kg
Height without clamp (H)	104 in	2630 mm
Length (L)	98 in	2470 mm
Width (W)	26.5 in	675 mm
Throat width (TW)	17.5 in	445 mm
Hydraulic hose length	150 ft	46 m
Hydraulic hose weight	2,400 lbs	1090 kg
Height with sheeting clamp (HH)	150 in	3800 kg
Weight with sheeting clamp & 1/2 hoses	26,050 lbs	11820 kg
Height with beam & caisson clamps	156 in	3955 mm
Weight with beam, caisson clamps & 1/2 hoses	30,835 lbs	14000 kg



ICE Model 1200E Power Unit		
Engine	Caterpillar 2x C15	
Emissions rating	EPA Flex	EU Flex
Power	1190 HP	887 kW
Operating speed	1875 rpm	1875 rpm
Maximum motors pressure	5500 psi	380 bar
Motors flow (no load)	265 gpm	1000 lpm
Clamp pressure	4500 psi	310 bar
Clamp flow	6 gpm	20 lpm
Weight (w/ full fluid & 1/2 fuel)	32,500 lbs	14740 kg
Length	224 in	5700 mm
Width	84 in	2135 mm
Height	114 in	2900 mm
Hydraulic oil capacity	550 gal	2080 liters
Fuel Capacity	430 gal	1625 liters

DESIGNED AND MANUFACTURED IN USA BY ICE®

WORLD LEADER IN COST-EFFECTIVE FOUNDATION EQUIPMENT SINCE 1974.

Constant improvement and engineering progress make it necessary that ICE®, Inc reserve the right to make specification changes without notice.  
 Please consult ICE® for the latest available information.

# ICE® Model 110D Hydraulic Vibratory Driver/Extractor with Model 1200E Power Unit



Patented Dual-pull™ suppressor provides maximum vibration isolation during driving and light extraction combined with high pull capability for tough extraction jobs.

Optional 5,500 lbs (2495 kg) of bias weight increases pile penetration rates in difficult soils. Full range of clamps available for sheet piling, H-Beams, pipe & caissons including quad caisson clamps.

Remote-control pendant for vibrator and clamp with emergency stop. Engine speed control for fuel efficiency.

Maximum efficiency and reliability ensured by our open-loop hydraulic system. Highest quality, reliable piston pumps and motors.

Environmentally friendly non-toxic, biodegradable hydraulic oil.

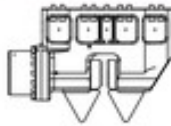
Adaptable for underwater operation.

Heavy steel enclosure and fuel-tank subbase protect power unit.

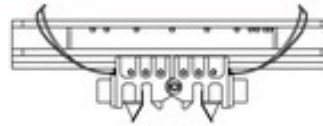


## Clamps & Accessories

ICE Model 385 Sheeting Clamp		
Clamping Force	385 tons	3430 kN
Weight	5850 lbs	2655 kg



ICE 10' Beam & 2 Model 180 Clamps		
Clamping Force	392 tons	3488 kN
Weight	11,840 lbs	5370 kg



ICE 7' Plate & 4 Model 105H Clamps		
Clamping Force	440 tons	3920 kN
Weight	15,500 lbs	7030 kg

ICE 9' Plate & 4 Model 105H Clamps		
Clamping Force	440 tons	3920 kN
Weight	18,200 lbs	8260 kg

ICE Quad Beam & 4 Model 105H Clamps		
Clamping Force	440 tons	3920 kN
Weight	24,140 lbs	10950 kg

ICE 15' Beam & 2 Model 180 Clamps		
Clamping Force	392 tons	3488 kN
Weight	21,980 lbs	9960 kg

## Model 110D Accessories

- 7' Plate with 4 Model 145H Clamps
- Wireless Remote
- Bias weights
- 7' Quad Plate
- 12' Quad beam

DESIGNED AND MANUFACTURED IN USA BY ICE®  
WORLD LEADER IN COST-EFFECTIVE FOUNDATION EQUIPMENT SINCE 1974.

©International Construction Equipment, Inc. All rights reserved. September 2017.

"Due to improvements to ICE manufactured products and the EPA mandated Tier III emission regulations, unit specifications are subject to change without notice. Please contact ICE engineering department to confirm possible changes."