



International Construction Equipment
301 Warehouse Drive
Matthews, NC 28104
Phone: 704 821-8200
Email info@iceusa.com

ICE® Model 28C Hydraulic Vibratory Driver/ Extractor with Model 350E Power Unit



Patented design combines high eccentric moment (2,800 in-lbs, 32 kg-m) and suspended weight with clamp under 9,800 lbs (4445 kg).

Lighter weight provides for increased reach or use with smaller cranes.

Reduced height for better access in low-overhead situations.

Up to 55 tons (490 kN) line pull for extraction.

Patented Dual-pull™ suppressor provides maximum vibration isolation during driving and light extraction combined with high pull capability for tough extraction jobs.

350HP (261 kW) CAT C9 Tier 3 (State IIIA) engine meets all EPA & EU emission regulations.

Computer controls on power unit reduce fuel consumption, pinpoint repair needs, while providing diagnostics and logs.

Optional 1,484 lbs (673 kg) bias weights increase pile penetration rates in difficult soils.

Maximum efficiency and reliability are provided by our open-loop hydraulic system and application proven piston pumps and motor.

Remote-control pendant for vibrator and clamp with emergency stop. Engine speed control for fuel efficiency.

Full range of clamps available for sheet piling, H-Beams, pipe & caissons in addition to timber & concrete piles.

Adaptable for underwater, low headroom or box leads operation.

Environmentally friendly Chevron Clarity® non-toxic, biodegradable hydraulic oil.





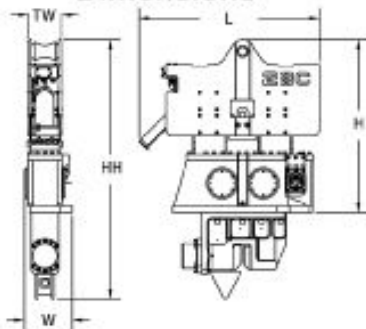
Designed and manufactured in the USA by ICE®, world leader in cost-effective foundation equipment since 1974.

INTERNATIONAL CONSTRUCTION EQUIPMENT, INC.

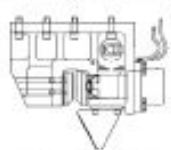
ICE® Model 28C Hydraulic Vibratory Driver/ Extractor with Model 350E Power Unit



Dimensions

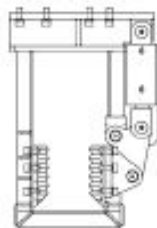


Clamps & Accessories



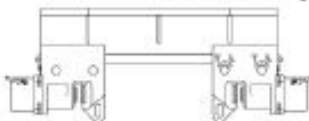
**Model 140C
Sheeting Clamp**

Clamping force
140 tons, 1245 kN
Weight
2,200 lbs, 1000 kg



**Model 40
Wood, Concrete
& Pipe Clamp**

Clamping force
40 tons, 355 kN
Weight
3,220 lbs, 1460 kg



**5' Caisson Beam with
Model 100BH Caisson Clamps**

Clamping force
220 tons, 1975 kN
Weight
2,900 lbs, 1356 kg

Other Model 28C Accessories

- 6' Caisson beam
- 10' Clamp extension
- 90° Turning plate
- Bias weights
- Vibrator stand
- Wireless remote

Model 28C Vibrator Specifications

Eccentric moment	2,800 in-lbs	32 kg-m
Maximum frequency	1700 vpm	
Driving force	118 tons	1050 kN
Centrifugal force	115 tons	1023 kN
Amplitude (free w/o clamp)	1.2 in	30 mm
Standard line pull for extracting	55 tons	490 kN
Maximum line pull for extracting	55 tons	490 kN
Weight (no clamp or hoses)	6,880 lbs	3121 kg
Non-vibrating weight	2,140 lbs	971 kg
Height without clamp (H)	76 in	1915 mm
Length (L)	79 in	2000 mm
Width (W)	21 in	527 mm
Throat width (TW)	14.25 in	362 mm
Hydraulic hose length	150 ft	46 m
Hydraulic hose weight	1,425 lbs	646 kg
Height with sheeting clamp* (HH)	114 in	2877 mm
Weight with sheeting clamp & 1/2 hoses*	9,795 lbs	4442 kg
Height with beam & caisson clamps*	101 in	2565 mm
Weight with beam & caisson clamps*	10,620 lbs	4820 kg

* See "Clamps and Accessories Manual" for in depth description

Model 350E Power Unit Specifications

Engine	Caterpillar C9	
Power	350 HP	261 kW
Operating speed	1,850 rpm	1850 rpm
Max. motors pressure	5,500 psi	380 bar
Motors flow (no load)	97 gpm	367 lpm
Clamp pressure	4,500 psi	310 bar
Clamp flow	6 gpm	24 lpm
Weight (w/ full fluid & 1/2 fuel)	11,350 lbs	5150 kg
Length	130 in	3300 mm
Width	63 in	1600 mm
Height	87 in	2200 mm
Hydraulic reservoir	275 gal	1040 liters
Fuel capacity	118 gal	445 liters

International Construction Equipment, Inc.
301 Warehouse Drive
Matthews, NC 28104 USA
888-ICE-USA1 / 704-821-8200

Constant improvement and engineering progress make it necessary that ICE®, Inc. reserve the right to make specification changes without notice. Please consult ICE®

"Due to improvements to ICE manufactured products and the EPA mandated Tier III emission regulations, unit specifications are subject to change without notice. Please contact ICE engineering department to confirm possible changes."