



International Construction Equipment
301 Warehouse Drive
Matthews, NC 28104
Phone: 704 821-8200
Email info@iceusa.com

Universal Series Model 44 With Model 350E Power Unit Hydraulic Vibratory Driver/ Extractor



Large vibrator combined with an economical power unit for a high performance, cost-effective system
350 HP (261 kW) CAT C9 Tier 3 (Stage IIIA) engine meets all EPA & EU emission regulations
Up to 80 tons (712 kN) line pull for extraction

Computer controls on power unit reduce fuel consumption, pinpoint repair needs, & provide diagnostics and logs.

Optional 5,500 lbs (2494 kg) of bias weight increases pile penetration rates in difficult soils.

Maximum efficiency and reliability ensured by our open-loop hydraulic system. Highest quality, reliable piston pumps and motors.

Remote-control pendant for vibrator and clamp with emergency stop. Engine speed control for fuel efficiency.

Full range of clamps available for sheet piling, H-Beams, pipe & caissons and timber & concrete piles.

Adaptable for underwater, low headroom or box leads operation.

Heavy steel enclosure and fuel-tank subbase protect power unit.

Environmentally friendly, Chevron Clarity® non-toxic, biodegradable hydraulic oil.

Designed and manufactured in USA by ICE®, world leader in cost-effective foundation equipment since 1974.



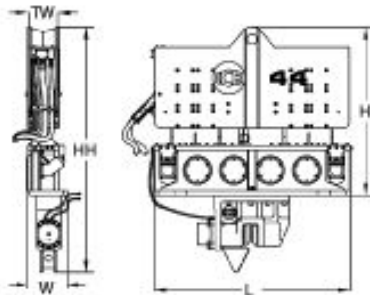


©International Construction Equipment, Inc. All rights reserved. May 2010.

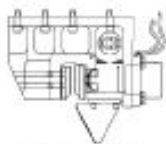
ICE® Model 44 Hydraulic Vibratory Driver/ Extractor with Model 350E Power Unit



Dimensions

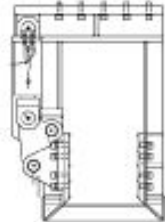


Clamps & Accessories



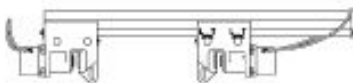
**Model 140C
Sheeting
Clamp**

Clamping force
140 tons, 1245 kN
Weight
2,200 lbs, 1000 kg



**Model 85
Wood, Concrete
& Pipe Clamp**

Clamping force
85 tons, 756 kN
Weight
6,500 lbs, 2950 kg



**6.5' Caisson Beam with
Model 100BH Caisson Clamps**

Clamping force
220 tons, 1975 kN
Weight
3,285 lbs, 1500 kg

Other Model 44B Accessories

6' & 12' Caisson beams 26" leads sled
10' Clamp extension Low-headroom suppressor
90° Turning plate Vibrator stand
Bias weights Wireless remote

Model 44 Vibrator Specifications

Eccentric moment	4,400 in-lbs	51 kg-m
Maximum frequency	1400 vpm	
Driving force	128 tons	1140 kN
Centrifugal force	122 tons	1085 kN
Amplitude (free w/o clamp)	1.1 in	28 mm
Standard line pull for extracting	54 tons	483 kN
Maximum line pull for extracting	80 tons	725 kN
Weight (no clamp or hoses)	12,450 lbs	5647 kg
Non-vibrating weight	4,560 lbs	2068 kg
Height without clamp (H)	84 in	2134 mm
Length (L)	98 in	2470 mm
Width (W)	22 in	560 mm
Throat width (TW)	14.25 in	362 mm
Hydraulic hose length	150 ft	46 m
Hydraulic hose weight	1,425 lbs	646 kg
Height with sheeting clamp* (HH)	122 in	3096 mm
Weight with sheeting clamp & 1/2 hoses*	15,365 lbs	6970 kg
Height with beam & caisson clamps*	110 in	2784 mm
Weight with beam & caisson clamps*	16,235 lbs	7365 kg

* See "Clamps and Accessories Manual" for in depth description

Model 350E Power Unit Specifications

Engine	Caterpillar C9	
Power	350 HP	261 kW
Operating speed	2,050 rpm	2050 rpm
Max. motors pressure	5,500 psi	380 bar
Motors flow (no load)	102 gpm	385 lpm
Clamp pressure	4,500 psi	310 bar
Clamp flow	6 gpm	24 lpm
Weight (w/ full fluid & 1/2 fuel)	11,350 lbs	5150 kg
Length	130 in	3300 mm
Width	63 in	1600 mm
Height	87 in	2200 mm
Hydraulic reservoir	275 gal	1040 liters
Fuel capacity	118 gal	445 liters

International Construction Equipment, Inc.
301 Warehouse Drive
Matthews, NC 28104 USA
888-ICE-USA1 / 704-821-8200

Constant improvement and engineering progress make it necessary that ICE®, Inc. reserve the right to make specification changes without notice. Please consult ICE®

"Due to improvements to ICE manufactured products and the EPA mandated Tier III emission regulations, unit specifications are subject to change without notice. Please contact ICE engineering department to confirm possible changes."