

ICE[®] Model 44 Hydraulic Vibratory Driver/ Extractor with Model 350G Power Unit



- Large vibrator combined with an economical power unit for a high performance, cost-effective system.
- 350 HP (261 kW) CAT C9 + engine meets all EPA & EU emission regulations.
- Up to 80 tons (725 kN) line pull for extraction.



Optional bias weights up to 5500 lbs (2494 kg) to increase pile penetration rates in difficult soils.

Maximum efficiency and reliability are provided by our open-loop hydraulic system and application proven piston pumps and motors.

Remote-control pendant for vibrator and clamp with emergency stop. Engine speed control for fuel efficiency.

Full range of clamps available for sheet piling, H-Beams, pipe & caissons in addition to timber & concrete piles.

Adaptable for underwater, low headroom or box leads operation.

Heavy steel enclosure and fuel-tank subbase protect power unit.

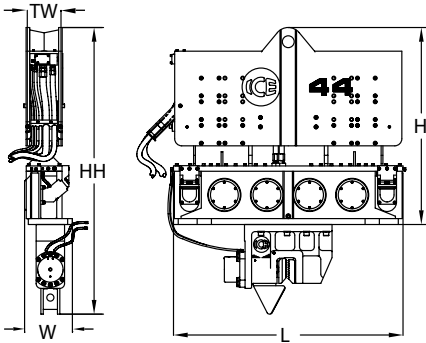
Environmentally friendly Chevron Clarity[®] non-toxic, biodegradable hydraulic oil.

Designed and manufactured in the USA by ICE[®], world leader in cost-effective foundation equipment since 1974.

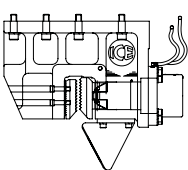
ICE® Model 44 Hydraulic Vibratory Driver/ Extractor with Model 350G Power Unit



Dimensions

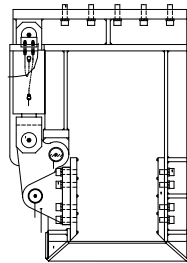


Clamps & Accessories



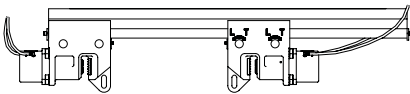
**Model 140C
Sheeting
Clamp**

Clamping force
140 tons, 1245 kN
Weight
2,200 lbs, 1000 kg



**Model 85
Wood, Concrete
& Pipe Clamp**

Clamping force
85 tons, 756 kN
Weight
6,500 lbs, 2950 kg



**6.5' Caisson Beam with
Model 100BH Caisson Clamps**

Clamping force
220 tons, 1975 kN
Weight
3,285 lbs, 1500 kg

Other Model 44 Accessories

6' & 12' Caisson beams 26" leads sled
10' Clamp extension Low-headroom suppressor
90° Turning plate Vibrator stand
Bias weights Wireless remote

Model 44 Vibrator Specifications

| | | |
|---|--------------|----------|
| Eccentric moment | 4,400 in-lbs | 51 kg-m |
| Maximum frequency | 1400 vpm | |
| Driving force | 128 tons | 1 140 kN |
| Centrifugal force | 122 tons | 1 085 kN |
| Amplitude (free w/o clamp) | 1.1 in | 28 mm |
| Standard line pull for extracting | 54 tons | 483 kN |
| Maximum line pull for extracting | 80 tons | 725 kN |
| Weight (no clamp or hoses) | 12,450 lbs | 5 647 kg |
| Non-vibrating weight | 4,560 lbs | 2 068 kg |
| Height without clamp (H) | 84 in | 2 134 mm |
| Length (L) | 98 in | 2 470 mm |
| Width (W) | 22 in | 560 mm |
| Throat width (TW) | 14.25 in | 362 mm |
| Hydraulic hose length | 150 ft | 46 m |
| Hydraulic hose weight | 1,425 lbs | 646 kg |
| Height with sheeting clamp* (HH) | 122 in | 3 096 mm |
| Weight with sheeting clamp & 1/2 hoses* | 15,365 lbs | 6 970 kg |
| Height with beam & caisson clamps* | 110 in | 2 784 mm |
| Weight with beam & caisson clamps* | 17,775 lbs | 8 065 kg |

* See "Clamps and Accessories Manual" for in depth description

Model 350G Power Unit Specifications

| | | |
|-----------------------------------|----------------|--------------|
| Engine | Caterpillar C9 | |
| Power | 350 HP | 261 kW |
| Operating speed | 2,050 rpm | 2 050 rpm |
| Max. motors pressure | 5,500 psi | 380 bar |
| Motors flow (no load) | 102 gpm | 385 lpm |
| Clamp pressure | 4,500 psi | 310 bar |
| Clamp flow | 6 gpm | 24 lpm |
| Weight (w/ full fluid & 1/2 fuel) | 11,350 lbs | 5 150 kg |
| Length | 130 in | 3 300 mm |
| Width | 63 in | 1 600 mm |
| Height | 87 in | 2 200 mm |
| Hydraulic reservoir | 275 gal | 1 040 liters |
| Fuel capacity | 118 gal | 445 liters |

International Construction Equipment, Inc.
301 Warehouse Drive
Matthews, NC 28104 USA
888-ICE-USA1 / 704-821-8200
sales@iceusa.com / www.iceusa.com

Constant improvement and engineering progress make it necessary that ICE®, Inc reserve the right to make specification changes without notice. Please consult ICE® for the latest available information.

©International Construction Equipment, Inc. All rights reserved. January 2012.