



International Construction Equipment
 301 Warehouse Drive
 Matthews, NC 28104
 Phone: 704 821-8200
 Email info@iceusa.com

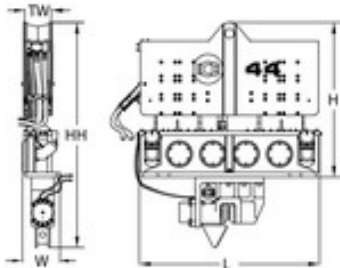
ICE® Model 44D Hydraulic Vibratory Driver/Extractor with Model 595H Power Unit



Highest frequency (1800 vpm) and driving force (207 tons, 1845 kN) in its class.
 595HP (444 kW) CAT C15 meets current EPA/EU Flexibility emission regulations.
 Up to 125 tons (1125 kN) line pull for extraction.



ICE Model 44D Vibratory Pile Hammer		
Eccentric moment	4400 in-lbs	51 kg-m
Maximum frequency	1800 vpm	
Driving Force	207 tons	1845 kN
Centrifugal force	202 tons	1790 kN
Amplitude (free w/o clamp)	1.1 in	28 mm
Standard line pull for extracting	65 tons	600 kN
Maximum line pull for extracting	100 tons	900 kN
Weight (no clamp or hoses)	12250 lbs	5555 kg
Non-vibrating Weight	4560 lbs	2070 kg
Height without clamp (H)	84 in	2135 mm
Length (L)	98 in	2485 mm
Width (W)	21 in	530 mm
Throat width (TW)	14.25 in	362 mm
Hydraulic hose length	150 ft	45 m
Hydraulic hose weight	1555 lbs	705 kg
Height with sheeting clamp (HH)	122 in	3095 mm
Weight with sheeting clamp & 1/2 hoses	15,230 lbs	6910 kg
Height with beam & caisson clamps	115 in	2915 mm
Weight with beam, caisson clamps & 1/2 hoses	17,350 lbs	7870 kg



ICE Model 595H Power Unit		
Engine	Caterpillar C15	
Emissions rating	EPA Flex	EU Flex
Power	595 HP	444 kW
Operating speed	1800 rpm	1800 rpm
Maximum motors pressure	5500 psi	380 bar
Motors flow (no load)	160 gpm	610 lpm
Clamp pressure	4500 psi	310 bar
Clamp flow	6 gpm	20 lpm
Weight (w/ full fluid & 1/2 fuel)	16350 lbs	7420 kg
Length	160 in	4040 mm
Width	73 in	1855 mm
Height	100 in	2540 mm
Hydraulic oil capacity	430 gal	1630 liters
Fuel Capacity	150 gal	570 liters

DESIGNED AND MANUFACTURED IN USA BY ICE®

WORLD LEADER IN COST-EFFECTIVE FOUNDATION EQUIPMENT SINCE 1974.

Constant improvement and engineering progress make it necessary that ICE®, Inc reserve the right to make specification changes without notice.

ICE® Model 44D Hydraulic Vibratory Driver/Extractor with Model 595H Power Unit



Optional bias weights up to 5500 lbs (2495 kg) to increase pile penetration rates in difficult soils.

Maximum efficiency and reliability are provided by our open-loop hydraulic system and application proven piston pumps and motors.

Remote-control pendant for vibrator and clamp with emergency stop. Engine speed control for fuel efficiency.

Full range of clamps available for sheet piling, H-Beams, pipe & caissons and timber & concrete piles.

Adaptable for underwater, low headroom or box leads operation.

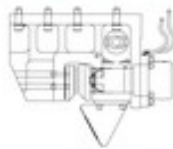
Heavy steel enclosure and fuel-tank subbase protect power unit.

Environmentally friendly non-toxic, biodegradable hydraulic oil.

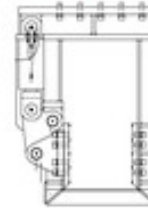


Clamps & Accessories

ICE Model 140C Sheeting Clamp		
Clamping Force	140 tons	1245 kN
Weight	2200 lbs	1000 kg



ICE Model 75 Wood Concrete and Pipe Clamp		
Clamping Force	75 tons	670 kN
Weight	6550 lbs	2970 kg



ICE 6.5' HD Beam and Two Model 105H Clamps		
Clamping Force	220 tons	1975 kN
Weight	4320 lbs	1960 kg



Model 44D Accessories

- 12' Caisson beam with 2 105H clamps
- 15' Caisson beam with 2 105H clamps
- 10' Clamp extension
- 90° Turning plate
- Bias weights
- 26" leads sled
- Low-headroom suppressor
- Vibrator stand
- Wireless remote

DESIGNED AND MANUFACTURED IN USA BY ICE®
WORLD LEADER IN COST-EFFECTIVE FOUNDATION EQUIPMENT SINCE 1974.

©International Construction Equipment, Inc. All rights reserved. September 2017.

"Due to improvements to ICE manufactured products and the EPA mandated Tier III emission regulations, unit specifications are subject to change without notice. Please contact ICE engineering department to confirm possible changes."