



International Construction Equipment  
301 Warehouse Drive  
Matthews, NC 28104  
Phone: 704 821-8200  
Email [info@iceusa.com](mailto:info@iceusa.com)

## ICE® Model 50B Hydraulic Vibratory Driver/ Extractor with Model 595E Power Unit



Combines high frequency (1700 vpm) and large eccentric moment (5,000 in-lbs, 57 kg-m).  
595HP (444 kW) CAT C15 Tier 3 (Stage IIIA) engine meets all EPA & EU emission regulations.  
Up to 80 tons (725 kN) line pull for extraction.



Computer controls on power unit reduce fuel consumption, pinpoint repair needs, while providing diagnostics and logs.

Optional bias weights up to 5500 lbs (2495 kg) to increase pile penetration rates in difficult soils.

Maximum efficiency and reliability are provided by our open-loop hydraulic system and application proven piston pumps and motors.

Remote-control pendant for vibrator and clamp with emergency stop. Engine speed control for fuel efficiency.

Full range of clamps available for sheet piling, H-Beams, pipe & caissons in addition to timber & concrete piles.

Adaptable for underwater, low headroom or box leads operation.

Heavy steel enclosure and fuel-tank subbase protect power unit.

Environmentally friendly Chevron Clarity® non-toxic, biodegradable hydraulic oil.

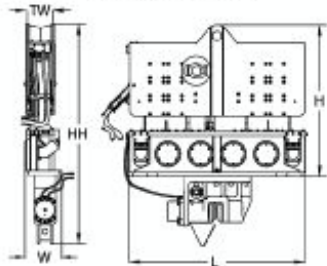
Designed and manufactured in the USA by ICE®, world leader in cost-effective foundation equipment since 1974.

**INTERNATIONAL CONSTRUCTION EQUIPMENT, INC.**

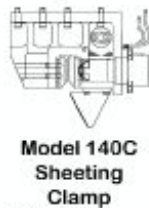
# ICE® Model 50B Hydraulic Vibratory Driver/ Extractor with Model 595E Power Unit



## Dimensions

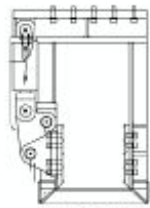


## Clamps & Accessories



**Model 140C  
Sheeting  
Clamp**

Clamping force  
140 tons, 1245 kN  
Weight  
2,200 lbs, 1000 kg



**Model 85  
Wood, Concrete  
& Pipe Clamp**

Clamping force  
85 tons, 756 kN  
Weight  
6,500 lbs, 2950 kg



**6.5' Caisson Beam with  
Model 100BH Caisson Clamps**

Clamping force  
220 tons, 1975 kN  
Weight  
3,285 lbs, 1500 kg

### Other Model 50B Accessories

12' Caisson beam	26" leads sled
10' Clamp extension	Low-headroom suppressor
90° Turning plate	Vibrator stand
Ball weights	Wireless remote

## Model 50B Vibrator Specifications

Eccentric moment	5,000 in-lbs	57 kg-m
Maximum frequency	1700 vpm	
Driving force	207 tons	1852 kN
Centrifugal force	205 tons	1797 kN
Amplitude (free w/o clamp)	1.3 in	32 mm
Standard line pull for extracting	54 tons	483 kN
Maximum line pull for extracting	80 tons	725 kN
Weight (no clamp or hoses)	12,555 lbs	5695 kg
Non-vibrating weight	4,560 lbs	2068 kg
Height without clamp (H)	84 in	2134 mm
Length (L)	97 in	2464 mm
Width (W)	21 in	534 mm
Throat width (TW)	14.25 in	362 mm
Hydraulic hose length	150 ft	46 m
Hydraulic hose weight	1,425 lbs	646 kg
Height with sheeting clamp* (HH)	122 in	3096 mm
Weight with sheeting clamp & 1/2 hoses*	15,465 lbs	7015 kg
Height with beam & caisson clamps*	110 in	2784 mm
Weight with beam & caisson clamps*	16,340 lbs	7410 kg

\* See "Clamps and Accessories Manual" for in depth description

## Model 595E Power Unit Specifications

Engine	Caterpillar C15	
Power	595 HP	444 kW
Operating speed	1,975 rpm	1975 rpm
Max. motors pressure	5,500 psi	380 bar
Motors flow (no load)	159 gpm	600 lpm
Clamp pressure	4,500 psi	310 bar
Clamp flow	6 gpm	21 lpm
Weight (w/ full fluid & 1/2 fuel)	16,350 lbs	7420 kg
Length	160 in	4040 mm
Width	73 in	1855 mm
Height	100 in	2540 mm
Hydraulic reservoir	430 gal	1630 liters
Fuel capacity	150 gal	570 liters

International Construction Equipment, Inc.  
301 Warehouse Drive  
Matthews, NC 28104 USA  
888-ICE-USA1 / 704-821-8200  
sales@iceusa.com / www.iceusa.com

Constant improvement and engineering progress make it necessary that ICE®, Inc reserve the right to make specification changes without notice. Please consult ICE® for the latest available information.

©International Construction Equipment, Inc. All rights reserved. May 2010.

UV-50-Sept-2010

"Due to improvements to ICE manufactured products and the EPA mandated Tier III emission regulations, unit specifications are subject to change without notice. Please contact ICE engineering department to confirm possible changes."