



International Construction Equipment  
 301 Warehouse Drive  
 Matthews, NC 28104  
 Phone: 704 821-8200  
 Email [info@iceusa.com](mailto:info@iceusa.com)

## ICE® Model 55C Hydraulic Vibratory Driver/Extractor with Model 800G Power Unit



WWW.ICEUSA.COM  
 888-ICE-USA1

Combines high frequency (1600 vpm) and largest eccentric moment (5,500 in-lbs, 63 kg-m) in its class  
 800 HP (522 kW) CAT C18 meets current EPA/EU Flexibility engine emission regulations  
 Up to 100 tons (900 kN) line pull for extraction

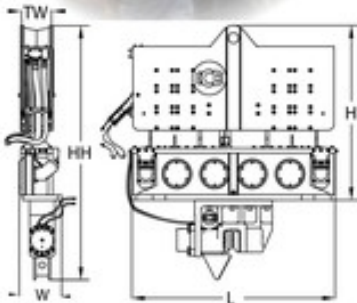


### ICE Model 55C Vibratory Pile Hammer

Eccentric moment	5500 in-lbs	63 kg-m
Maximum frequency	1600 vpm	
Driving Force	205 tons	1830 kN
Centrifugal force	200 tons	1770 kN
Amplitude (free w/o clamp)	1.4 in	34 mm
Standard line pull for extracting	65 tons	600 kN
Maximum line pull for extracting	100 tons	900 kN
Weight (no clamp or hoses)	12,660 lbs	5740 kg
Non-vibrating Weight	4560 lbs	2070 kg
Height without clamp (H)	84 in	2135 mm
Length (L)	98 in	2485 mm
Width (W)	21 in	530 mm
Throat width (TW)	14.25 in	362 mm
Hydraulic hose length	150 ft	45 m
Hydraulic hose weight	1555 lbs	705 kg
Height with sheeting clamp (HH)	122 in	3095 mm
Weight with sheeting clamp & 1/2 hoses	16,335 lbs	7410 kg
Height with beam & caisson clamps	115 in	2915 mm
Weight with beam, caisson clamps & 1/2 hoses	17,755 lbs	8050 kg

### ICE Model 800G Power Unit

Engine	Caterpillar C18	
Emissions rating	EPA Flex	EU Flex
Power	800 HP	597 kW
Operating speed	1800 rpm	1800 rpm
Maximum motors pressure	5200 psi	360 bar
Motors flow (no load)	250 gpm	950 lpm
Clamp pressure	4500 psi	310 bar
Clamp flow	6 gpm	20 lpm
Weight (w/ full fluid & 1/2 fuel)	26500 lbs	12020 kg
Length	218 in	5540 mm
Width	80 in	2035 mm
Height	104 in	2630 mm
Hydraulic oil capacity	550 gal	2080 liters
Fuel Capacity	200 gal	750 liters



DESIGNED AND MANUFACTURED IN USA BY ICE®

WORLD LEADER IN COST-EFFECTIVE FOUNDATION EQUIPMENT SINCE 1974.

Constant improvement and engineering progress make it necessary that ICE®, Inc reserve the right to make specification changes without notice.  
 Please consult ICE® for the latest available information.

# ICE® Model 55C Hydraulic Vibratory Driver/Extractor with Model 800G Power Unit



Optional 5,500 lbs (2495 kg) of bias weight increases pile penetration rates in difficult soils.

Maximum efficiency and reliability ensured by our open-loop hydraulic system. Highest quality, reliable piston pumps and motors.

Remote-control pendant for vibrator and clamp with emergency stop. Engine speed control for fuel efficiency.

Environmentally friendly non-toxic, biodegradable hydraulic oil.

Full range of clamps available for sheet piling, H-Beams, pipe & caissons and timber & concrete piles.

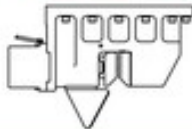
Adaptable for underwater, low headroom or box leads operation.

Heavy steel enclosure and fuel-tank subbase protect power unit.

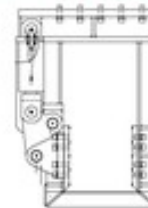


## Clamps & Accessories

ICE Model 196C Sheet Piling Clamp		
Clamping Force	196 tons	1744 kN
Weight	2900 lbs	1315 kg



ICE Model 75 Wood Concrete and Pipe Clamp		
Clamping Force	75 tons	670 kN
Weight	6550 lbs	2970 kg



ICE 6.5' HD Caisson Beam & 2 Model 105H Clamps		
Clamping Force	220 tons	1960 kN
Weight	4320 lbs	1960 kg



ICE 12' Beam & 2 Model 105H Clamps		
Clamping Force	220 tons	1960 kN
Weight	6440 lbs	2940 kg

ICE 15' Beam & 2 Model 105H Clamps		
Clamping Force	284 tons	2520 kN
Weight	19,100 lbs	8655 kg

## Model 55C Accessories

- 10' Clamp extension
- 90° Turning plate
- Bias weights
- 26" leads sled
- Low-headroom suppressor
- Vibrator stand
- Wireless remote

DESIGNED AND MANUFACTURED IN USA BY ICE®  
WORLD LEADER IN COST-EFFECTIVE FOUNDATION EQUIPMENT SINCE 1974.

©International Construction Equipment, Inc. All rights reserved. September 2017.

"Due to improvements to ICE manufactured products and the EPA mandated Tier III emission regulations, unit specifications are subject to change without notice. Please contact ICE engineering department to confirm possible changes."