



International Construction Equipment
301 Warehouse Drive
Matthews, NC 28104
Phone: 704 821-8200
Email info@iceusa.com

ICE® Model 77C Hydraulic Vibratory Driver/ Extractor with Model 800E Power Unit



Design combines large eccentric moment (7,700 in-lbs, 88 kg-m) and high frequency (1650 vpm) for maximum driving performance.
800HP (597kW) CAT C18 Tier 2 (Stage II) engine meets all EPA & EU emission regulations.
Up to 95 tons (845 kN) line pull for extraction.

Patented Dual-pull™ suppressor provides maximum vibration isolation during driving and light extraction combined with high pull capability for tough extraction jobs.

Computer controls on power unit reduce fuel consumption, pinpoint repair needs, while providing diagnostics and logs.

Optional bias weights up to 5500 lbs (2495 kg) to increase pile penetration rates in difficult soils.

Maximum efficiency and reliability are provided by our open-loop hydraulic system and application proven piston pumps and motors.

Remote-control pendant for vibrator and clamp with emergency stop. Engine speed control for fuel efficiency.

Full range of clamps available for sheet piling, H-Beams, pipe & caissons in addition to timber & concrete piles.

Adaptable for underwater, low headroom or box leads operation.

Heavy steel enclosure and fuel-tank subbase protect power unit.

Environmentally friendly Chevron Clarity® non-toxic, biodegradable hydraulic oil.



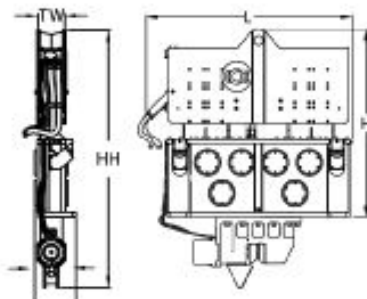
Designed and manufactured in the USA by ICE®, world leader in cost-effective foundation equipment since 1974.

INTERNATIONAL CONSTRUCTION EQUIPMENT, INC.

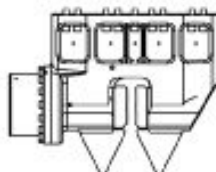
ICE® Model 77C Hydraulic Vibratory Driver/ Extractor with Model 800E Power Unit



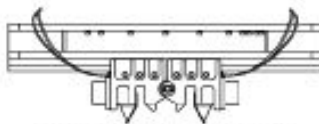
Dimensions



Clamps & Accessories



**Model 385
Sheeting Clamp**
Clamping force
385 tons, 3425 kN
Weight
5,400 lbs, 2455 kg



**10' Caisson Beam with
Model 142BH Caisson Clamps**
Clamping force
284 tons, 1526 kN
Weight
10,242 lbs, 4546 kg

Other Model 77C Accessories

10' Clamp extension
Wireless Remote
90° Turning plate
Bias weights
Vibrator stand
Sled for 32' leads

Model 77C Vibrator Specifications

Eccentric moment	7,700 in-lbs	88 kg-m
Maximum frequency	1650 vpm	
Driving force	309 tons	2750 kN
Centrifugal force	298 tons	2650 kN
Amplitude (free w/o clamp)	1.4 in	35 mm
Standard line pull for extracting	70 tons	620 kN
Maximum line pull for extracting	95 tons	845 kN
Weight (no clamp or hoses)	15,860 lbs	7195 kg
Non-vibrating weight	4,560 lbs	2070 kg
Height without clamp (H)	101 in	2550 mm
Length (L)	98 in	2940 mm
Width (W)	22 in	560 mm
Throat width (TW)	14.25 in	362 mm
Hydraulic hose length	150 ft	46 m
Hydraulic hose weight	2,400 lbs	1090 kg
Height with sheeting clamp* (HH)	147 in	3720 mm
Weight with sheeting clamp & 1/2 hoses*	22,560 lbs	10230 kg
Height with beam & caisson clamps*	126 in	3203 mm
Weight with beam & caisson clamps*	27,320 lbs	12390 kg

* See "Clamps and Accessories Manual" for in depth description

Model 800E Power Unit Specifications

Engine	Caterpillar C18	
Power	800 HP	597 kW
Operating speed	1,800 rpm	1800 rpm
Maximum motors pressure	5,500 psi	380 bar
Motors flow (no load)	250 gpm	950 lpm
Clamp pressure	4,500 psi	310 bar
Clamp flow	6 gpm	21 lpm
Weight (w/ full fluid & 1/2 fuel)	26,500 lbs	12020 kg
Length	218 in	5540 mm
Width	80 in	2035 mm
Height	104 in	2630 mm
Hydraulic reservoir	550 gal	2080 liters
Fuel capacity	200 gal	750 liters

International Construction Equipment, Inc.
301 Warehouse Drive
Matthews, NC 28104 USA
888-ICE-USA1 / 704-821-8200

Constant improvement and engineering progress make it necessary that ICE®, Inc. reserve the right to make specification changes without notice. Please consult ICE®

"Due to improvements to ICE manufactured products and the EPA mandated Tier III emission regulations, unit specifications are subject to change without notice. Please contact ICE engineering department to confirm possible changes."