



International Construction Equipment
 301 Warehouse Drive
 Matthews, NC 28104
 Phone: 704 821-8200
 Email info@iceusa.com

ICE® Model 77C Hydraulic Vibratory Driver/Extractor with Model 800G Power Unit



WWW.ICEUSA.COM
 888-ICE-USA1

Design combines large eccentric moment (7,700 in.-lbs, 88 kg-m) and high frequency for maximum driving performance. 800HP (597kW) CAT C18 engine meets current EPA/EU Flexibility engine emission regulations
 Up to 125 tons (1125 kN) line pull for extraction.

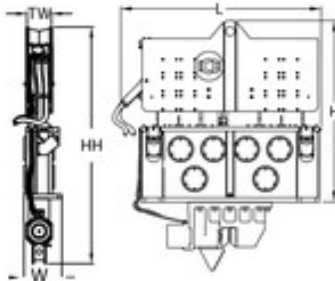


ICE Model 77C Vibratory Pile Hammer

Eccentric moment	7700 in.-lbs	88 kg-m
Maximum frequency	1650 vpm	
Driving Force	310 tons	2885 kN
Centrifugal force	300 tons	2650 kN
Amplitude (free w/o clamp)	1.4 in	35 mm
Standard line pull for extracting	95 tons	850 kN
Maximum line pull for extracting	125 tons	1125 kN
Weight (no clamp or hoses)	15,860 lbs	7195 kg
Non-vibrating Weight	4,560 lbs	2070 kg
Height without clamp (H)	101 in	2550 mm
Length (L)	98 in	2485 mm
Width (W)	21 in	530 mm
Throat width (TW)	14.25 in	362 mm
Hydraulic hose length	150 ft	45 m
Hydraulic hose weight	2,400 lbs	1090 kg
Height with sheeting clamp (HH)	147 in	3720 mm
Weight with sheeting clamp & 1/2 hoses	22,910 lbs	10390 kg
Height with beam & caisson clamps	153 in	3880 mm
Weight with beam, caisson clamps & 1/2 hoses	27,700 lbs	12560 kg

ICE Model 800G Power Unit

Engine	Caterpillar C18	
Emissions rating	EPA Flex	EU Flex
Power	800 HP	597 kW
Operating speed	1800 rpm	1800 rpm
Maximum motors pressure	5200 psi	360 bar
Motors flow (no load)	250 gpm	950 lpm
Clamp pressure	4500 psi	310 bar
Clamp flow	6 gpm	20 lpm
Weight (w/ full fluid & 1/2 fuel)	26,500 lbs	12020 kg
Length	218 in	5540 mm
Width	80 in	2035 mm
Height	104 in	2630 mm
Hydraulic oil capacity	550 gal	2080 liters
Fuel Capacity	200 gal	750 liters



DESIGNED AND MANUFACTURED IN USA BY ICE®

WORLD LEADER IN COST-EFFECTIVE FOUNDATION EQUIPMENT SINCE 1974.

Constant improvement and engineering progress make it necessary that ICE®, Inc reserve the right to make specification changes without notice.
 Please consult ICE® for the latest available information.

ICE® Model 77C Hydraulic Vibratory Driver/Extractor with Model 800G Power Unit



Patented Dual-pull™ suppressor provides maximum vibration isolation during driving and light extraction combined with high pull capability for tough extraction jobs.

Optional 5,500 lbs (2494 kg) of bias weight increases pile penetration rates in difficult soils.

Full range of clamps available for sheet piling, H-Beams, pipe & caissons and timber & concrete piles.

Maximum efficiency and reliability ensured by our open-loop hydraulic system. Highest quality, reliable piston pumps and motors.

Remote-control pendant for vibrator and clamp with emergency stop. Engine speed control for fuel efficiency.

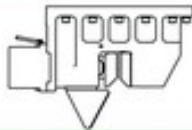
Environmentally friendly non-toxic, biodegradable hydraulic oil.

Adaptable for underwater, low headroom or box leads operation.

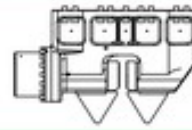


Clamps & Accessories

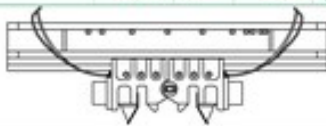
ICE Model 196C Sheeting Clamp		
Clamping Force	196 tons	1744 kN
Weight	2900 lbs	1315 kg



ICE Model 240 Sheeting Clamp		
Clamping Force	240 tons	2135 kN
Weight	3900 lbs	1770 kg



ICE 6' HD Beam & 2 Model 145H Clamps		
Clamping Force	220 tons	1960 kN
Weight	4,320 lbs	1960 kg



ICE Model 75 Wood Concrete and Pipe Clamp		
Clamping Force	75 tons	670 kN
Weight	6550 lbs	2970 kg



ICE 10' Beam & 2 Model 145H Clamps		
Clamping Force	284 tons	2520 kN
Weight	10,500 lbs	4760 kg

ICE Model 165 Wood Concrete and Pipe Clamp		
Clamping Force	165 tons	1470 kN
Weight	12,710 lbs	5765 kg

ICE 12' Beam & 2 Model 145H Clamps		
Clamping Force	220 tons	1960 kN
Weight	8150 lbs	3700 kg

ICE 15' Beam & 2 Model 145H Clamps		
Clamping Force	284 tons	2520 kN
Weight	20,640 lbs	9360 kg

Model 77C Accessories

- Wireless Remote
- 90° Turning Plate
- Bias Weights
- Vibrator Stand
- Sled for 32" Leads

DESIGNED AND MANUFACTURED IN USA BY ICE®
WORLD LEADER IN COST-EFFECTIVE FOUNDATION EQUIPMENT SINCE 1974.

©International Construction Equipment, Inc. All rights reserved. September 2017.

"Due to improvements to ICE manufactured products and the EPA mandated Tier III emission regulations, unit specifications are subject to change without notice. Please contact ICE engineering department to confirm possible changes."