



International Construction Equipment
 301 Warehouse Drive
 Matthews, NC 28104
 Phone: 704 821-8200
 Email info@iceusa.com

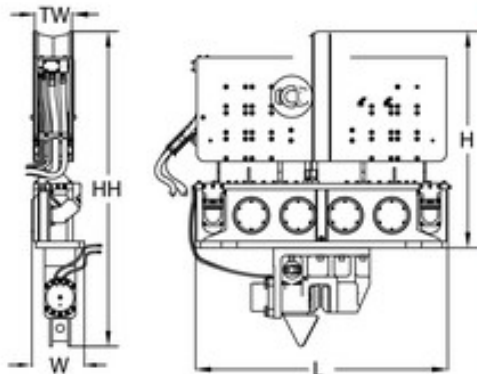
ICE® Model 817 Hydraulic Vibratory Driver/Extractor with Model 595H Power Unit



Highest frequency (1600 vpm) in its class.
 595HP (444 kW) CAT C15 meets current EPA/EU Flexibility emission regulations
 Up to 50 tons (445 kN) line pull for extraction.



ICE Model 817 Vibratory Driver/Extractor		
Eccentric moment	4400 in-lbs	51 kg-m
Maximum frequency	1600 vpm	
Centrifugal force	160 tons	1425 kN
Amplitude (free w/o clamp)	1 in	25 mm
Maximum line pull for extracting	50 tons	445 kN
Weight (no clamp or hoses)	13500 lbs	6125 kg
Non-vibrating Weight	4000 lbs	1815 kg
Height without clamp (H)	88 in	2235 mm
Length (L)	104 in	2645 mm
Width (W)	24 in	610 mm
Throat width (TW)	12 in	305 mm
Hydraulic hose length	150 ft	46 m
Hydraulic hose weight	1555 lbs	705 kg
Height with sheeting clamp (HH)	126 in	3200 mm
Weight with sheeting clamp & 1/2 hoses	15750 lbs	7145 kg
Height with beam & caisson clamps	140 in	3505 mm
Weight with beam, caisson clamps & 1/2 hoses	24540 lbs	11130 kg



ICE Model 595H Power Unit		
Engine	Caterpillar C15	
Emissions rating	EPA Flex	EU Flex
Power	595 HP	444 kW
Operating speed	1800 rpm	1800 rpm
Maximum motors pressure	5500 psi	380 bar
Motors flow (no load)	160 gpm	610 lpm
Clamp pressure	4500 psi	310 bar
Clamp flow	6 gpm	20 lpm
Weight (w/ full fluid & 1/2 fuel)	16350 lbs	7420 kg
Length	160 in	4040 mm
Width	73 in	1855 mm
Height	100 in	2540 mm
Hydraulic oil capacity	430 gal	1630 liters
Fuel Capacity	150 gal	570 liters

DESIGNED AND MANUFACTURED IN USA BY ICE®
 WORLD LEADER IN COST-EFFECTIVE FOUNDATION EQUIPMENT SINCE 1974.
 Constant improvement and engineering progress make it necessary that ICE®, Inc reserve the right to make specification changes without notice.

ICE® Model 817 Hydraulic Vibratory Driver/Extractor with Model 595H Power Unit



Optional bias weights up to 5500 lbs (2494 kg) to increase pile penetration rates in difficult soils.

Maximum efficiency and reliability are provided by our open-loop hydraulic system and application proven piston pumps and motors.

Remote-control pendant for vibrator and clamp with emergency stop. Engine speed control for fuel efficiency.

Full range of clamps available for sheet piling, H-Beams, pipe & caissons and timber & concrete piles.

Adaptable for underwater, low headroom or box leads operation.

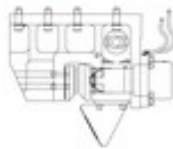
Heavy steel enclosure and fuel-tank subbase protect power unit.

Environmentally friendly non-toxic, biodegradable hydraulic oil.

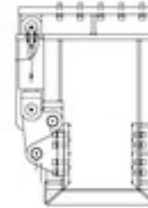


Clamps & Accessories

ICE Model 140C Sheeting Clamp		
Clamping Force	140 tons	1245 kN
Weight	2200 lbs	1000 kg



ICE Model 75 Wood Concrete and Pipe Clamp		
Clamping Force	75 tons	655 kN
Weight	6550 lbs	2970 kg



ICE 6.5' HD Caisson Beam & 2 Model 105H Clamps		
Clamping Force	220 tons	1975 kN
Weight	4320 lbs	1960 kg



Model 817 Accessories

- 12' Caisson beam
- 10' Clamp extension
- 90° Turning plate
- Bias weights
- 26" leads sled
- Low-headroom suppressor
- Vibrator stand
- Wireless remote

DESIGNED AND MANUFACTURED IN USA BY ICE®
WORLD LEADER IN COST-EFFECTIVE FOUNDATION EQUIPMENT SINCE 1974.

©International Construction Equipment, Inc. All rights reserved. September 2017.

"Due to improvements to ICE manufactured products and the EPA mandated Tier III emission regulations, unit specifications are subject to change without notice. Please contact ICE engineering department to confirm possible changes."